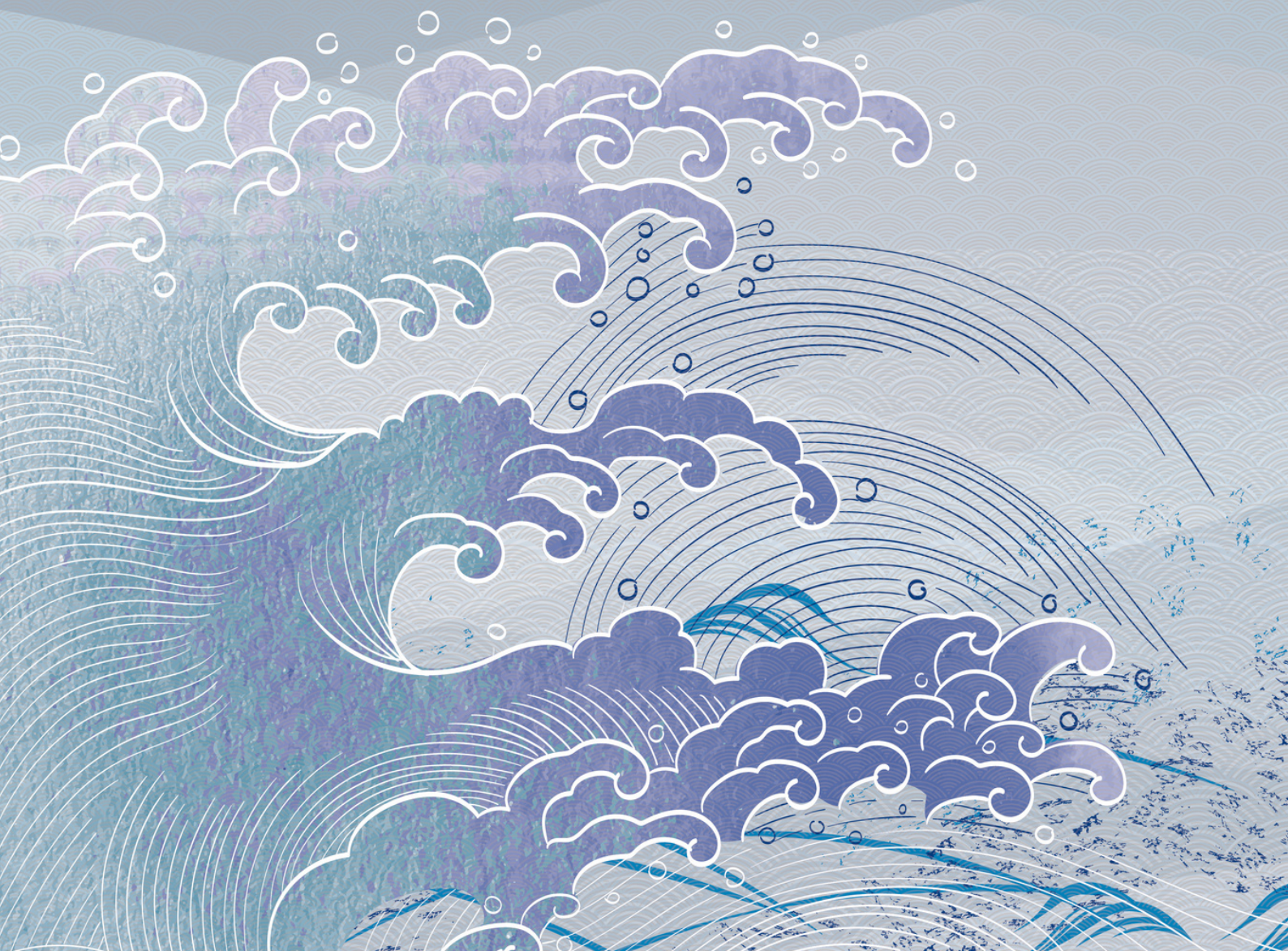




NEE YAKITORI & BAR







## NEE YAKITORI & BAR

Nee Yakitori, Joo Chiat's latest addition, aims to break the neighbourhood's lasting impression of a rowdy backwater. At Nee (which mean 'Hey!' In Nihongo) we make meticulous effort to bring subtle elements of Ginza's starched collar cocktail culture to our shores.

Our team employs the famed charcoal Binchotan, known for its searing heat that form the smokey flavour profile that is synonymous with Yakitori.

Our chef's selection of teppanyaki dishes aims to complement the variety of fine Japanese Sake and whisky available bringing guests a unique "Nee!" experience!

325 Joo chiat Rd, Singapore 427582

☎ 6996 4364

f @ neeyakitori 🌐 [www.neeyakitori.com](http://www.neeyakitori.com)

## TORI



## KUSHIYAKI

TEBASAKI	3.5
<i>Chicken mid wing</i>	
TORI NEGIMA	2.6
<i>Leek &amp; Chicken</i>	
TORI KUSHI	3.6
<i>Minced Chicken marinated with Sweet Sauce</i>	
UZURA	2.6
<i>Quail Eggs</i>	

## BUTA

### SHIITAKE BEKON

*Shiitake Mushroom Wrapped in Bacon*

3.6

### ENOKI BEKON

*Enoki Mushroom Wrapped in Bacon*

3.5

### CHERI TOMATO BEKON

*Cherry Tomatoes Wrapped in Bacon*

3.5

### UZURA BEKON

*Quail Eggs Wrapped in Bacon*

3.5

### TONKUSHI

*Minced Pork Marinated in Sweet Sauce*

4.5

### ASUPARAGASU BEKON

*Asparagus Wrapped in Bacon*

3.5

KUSHIYAKI



# GYUNIKU



## KUSHIYAKI

GYUNIKU SHIOYAKI	6.5
Beef with Salt	
ENOKI GYUNIKU	4.5
<i>Golden Mushroom Wrapped in Beef</i>	
ASUPARAGASU GYUNIKU	4.5
<i>Asparagus Wrapped in Beef</i>	
SHIITAKE GYUNIKU	4.5
<i>Shiitake Mushroom Wrapped in Beef</i>	

# YASAI

CHERI TOMATO  
*Cherry Tomatoes*

1.8

NINNIKU  
*Garlic*

1.8

SHIITAKE TRUFFLE  
*Shiitake Mushroom with Truffle Oil*

3.5

SHISHITO  
*Green Pepper*

3.5

OKURA  
*Lady's Finger*

1.8

ASUPARAGASU  
*Asparagus*

2.5

SHIRO NEGI  
*Leek*

1.8

TOUMOROKOSHI  
*Corn with Salt & Butter*

2.5

TAMA NEGI  
*Onion*

1.8

SATSUMAIMO SHIO  
*Sweet Potato*

4

**KUSHIYAKI**



 VEGETARIAN OPTION | PLEASE ADVISE STAFF OF YOUR DIETARY REQUIREMENTS WHEN PLACING YOUR ORDER  
PRICES ARE SUBJECT TO 10% SERVICE CHARGE AND APPLICABLE TAXES

# KAISEN



**EBI MENTAI & NINIKU** 15.8  
*Prawns with Mentaiko & Garlic Dressing*

# KUSHIYAKI



**SHISHAMO** 8.8  
*Grilled Hokkaido Fish (4 pcs)*



**HOTATE MENTAI & NINIKU** 11.8  
*Grilled Scallop with garlic dressing*



**EBI SHIOYAKI** 6.8  
*Prawns seasoned with Salt (2 pcs)*



**EHIRE** 11.8  
*Stingray*



# KAISEN



UNAGI KEBAYAKI

14.8

*Grilled Eel*



SAKE BARA SHIOYAKI

12.8

*Grilled salmon belly*



SABA SHIOYAKI

13.8

*Grilled Mackerel*

KUSHIYAKI

SPIDER SALADA 15  
*Soft-shell Crab Salad*

SPIDER 18  
*Deep-fried Soft-shell Crab*



ZENSAI



ABOKADO SALADA ♡ 9  
*Avocado, mix salad with sesame dressing*

♡ VEGETARIAN OPTION | PLEASE ADVISE STAFF OF YOUR DIETARY REQUIREMENTS WHEN PLACING YOUR ORDER  
PRICES ARE SUBJECT TO 10% SERVICE CHARGE AND APPLICABLE TAXES



KIMCHI ✓  
*Korean Picked Vegetable*

6



TAKO WASABI  
*Squid in wasabi marinade*

8



EDAMAME/SPICY EDAMAME ✓ 6/8  
*Japanese Bean / Spicy with Lau Gan Ma*

6/8



MORO KYUURI ✓  
*Cucumber with Japanese Miso*

6



CHUKA IDAKO  
*Seasoned Baby Octopus*

6.5



TUNA NEGI SALAD  
*Tuna Chunks with Onion Salad*

6.5



CHUKA KURAAGE  
*Seasoned Jellyfish*

6.5



AJITSUKE TAMAGO  
*Seasoned Egg*

2

ZENSAI

✓ VEGETARIAN OPTION | PLEASE ADVISE STAFF OF YOUR DIETARY REQUIREMENTS WHEN PLACING YOUR ORDER  
PRICES ARE SUBJECT TO 10% SERVICE CHARGE AND APPLICABLE TAXES

GYUNIKU TEPPANYAKI 22.8

*Beef in Garlic Butter Sauce*



TEPPANYAKI

TORI TEPPANYAKI 12.8

*Chicken in Garlic Sweet Sauce*



VEGETARIAN OPTION | PLEASE ADVISE STAFF OF YOUR DIETARY REQUIREMENTS WHEN PLACING YOUR ORDER  
PRICES ARE SUBJECT TO 10% SERVICE CHARGE AND APPLICABLE TAXES



YASAI ITAME  8.8  
*Stir-fried assorted vegetables*



SAKE MENTAI 13.8  
*Salmon in mentai dressing*



BUTA BARA SHIOGAYAKI 12.8  
*Pork Belly Stir-fried in Ginger Sauce*



SURUMEIKA TEPPANYAKI 17.8  
*Cuttlefish in garlic butter sauce*

TEPPANYAKI

TAPAS



TRUFFLE FRIES ✓  
*Fries in Truffle Oil*

9.5



GYOZA MAYO KARAAGE 7.5  
*Fried Dumplings in Mayo*



KOROKKE 9.5  
*Coroquette in Special Sauce*

9.5



EBI FURAI 9.5  
*Fried Breaded Prawns*

9.5



TAKO KARAAGE 9.5  
*Fried Octopus*

9.5



TORI KARAAGE 9.5  
*Fried Chicken*

9.5



CHISANA KANI 9.5  
*Deep-fried Baby Crabs*



AGEDASHI TOFU 7.5  
*Deep-fried Bean Curd*



AMAEBI 9.5  
*Deep-fried Baby Shrimps*



KAWA KARAAGE 7.5  
*Deep-fried Chicken Skin*



CHICKEN KATSU WITH SALSA 9.5  
*Deep-fried Chicken Cutlet with Salsa Dressing*



TORI NAMBAN KARAAGE 10.8  
*Deep-fried Chicken with Namban Vinegar and Tartare Sauce*

TAPAS

RICE & NOODLES



GARLIC YAKI MESHİ 6.8  
Garlic Fried Rice



CHA SOBA ✓ 8.8  
cold Buckwheat Noodles



HOT UDON/SOBA 8.8  
Udon/Soba in Dashi Soup



GOMA COLD UDON ✓ 8.8  
Cold Udon with Sesame Dipping Sauce

YAKI UDON ✓ 11.8  
Stir-Fried Udon

GOHAN ✓ 2  
Steamed white rice

MISO SOUP 2  
Fermented bean paste soup



# DESSERT

MATCHA ICE CREAM	6
<i>green tea ice cream</i>	
GOMA ICE CREAM	6
<i>Sesame ice cream</i>	
MOCHI ICHIGO	6
<i>Japanese mochi in seasonal flavours</i>	





久保田  
KUBOTA

純米大吟醸 45  
DASSAI 45  
獺祭

純米大吟醸 45

千壽 吟醸

純米大吟醸 磨き二割三分  
DASSAI 23  
獺祭

旭百造株式会社

創業萬年十四年  
月桂冠  
京都伏見の名水仕込み

純米大吟醸 磨き三割九分  
DASSAI 39  
獺祭

旭百造株式会社

純米大吟醸  
INMAI  
SAKE 1.8L

松竹梅

## SAKE

*300ml*

GEKKEIKAN UMEISHU

28

TAKARA JUNMAI SAKE

36

GEKKEIKAN JUNMAI DAIGINYO SAKE

48

DASSAI 45

58

*720ml*

TAKARA JUNMAI SAKE

88

GEKKEIKAN DAIGINJO SAKE

118

DASSAI 45

128

DASSAI 39

168

DASSAI 23

258

*1.8l*

TAKARA JUNMAI SAKE

128

GEKKEIKAN DAIGINJO SAKE

198

DASSAI 45

258

DASSAI 39

358

DASSAI 23

498

KUBOTA SENJYU GINJYO

258

KUBOTA MANJYU JUNMAI DAIGINJYO

498

DRINKS

## WHISKEY

<i>HIBIKI HARMONY</i>	448
<i>HAKUSHU DR</i>	468
<i>YAMAZAKI DR</i>	468
<i>YAMAZAKI 12</i>	988
<i>KAKUBIN</i>	178
<i>MONKEY SHOULDER</i>	188
<i>NAKED MALT</i>	188
<i>GLENFIDDICH 12</i>	208
<i>GLENFIDDICH 15</i>	278
<i>GLENFIDDICH 18</i>	388
<i>GLENFIDDICH 21</i>	988
<i>AUCHENTOSHAN 3WOOD</i>	208
<i>AUCHENTOSHAN 18</i>	318
<i>HIGHLAND PARK 12</i>	228
<i>HIGHLAND PARK 18</i>	468
<i>TAMNAVULIN DOUBLE CASK</i>	188
<i>FETTERCAIRN 12</i>	188
<i>BALVENIE 12 DOUBLEWOOD</i>	238
<i>BALVENIE 14 CARIBBEAN CASK</i>	388
<i>BALVENIE 21 PORT WOOD</i>	998
<i>GLENROTHES 12</i>	278
<i>GLENROTHES MAKERS' CUT</i>	398
<i>GLENROTHES 18</i>	588
<i>MACALLAN 12 SHERRY CASK</i>	348
<i>MACALLAN 12 DOUBLE CASK</i>	328
<i>MACALLAN 15 DOUBLE CASK</i>	458
<i>MACALLAN 18 DOUBLE CASK</i>	998
<i>SPEY CHAIRMAN'S CHOICE</i>	298
<i>SPEY ROYAL</i>	588
<i>SPEY 18 YEARS</i>	698
<i>DALMORE 12</i>	268
<i>DALMORE 15</i>	358
<i>DALMORE KING ALEXANDER</i>	698

## COGNAC/BRANDY

	GLASS	BOTTLE
MARTELL VSOP		248
MARTELL CORDON BLEU		598
COURVOISIER VSOP		188
COURVOISIER XO		558

## TEQUILA

	GLASS	BOTTLE
PATRON SILVER		218
DON JULIO BLANCO	16	188

## GIN

	GLASS	BOTTLE
ROKU	16	168
HENDRICK'S		188
NORDES		188
MONKEY 47 (500ML)		188

## RUM

	GLASS	BOTTLE
BACARDI WHITE	15	168
SAILOR JERRY	15	168

## VODKA

	GLASS	BOTTLE
GREY GOOSE	16	178
BELVEDERE		188

## BOURBON

	GLASS	BOTTLE
JIM BEAM WHITE	15	168
MAKERS' MARK	15	188

DRINKS

**DRINKS**

**WINE**

	GLASS	BOTTLE
<i>THE WINDMILL SHIRAZ</i>	15	88
<i>THE WINDMILL CHARDONNAY</i>	15	88

**CHAMPAGNE**

	GLASS	BOTTLE
<i>VEUVE CLICQUOT YELLOW LABEL</i>	35	158
<i>MUMM CORDON ROGUE</i>	30	148

**NON- ALCOHOLIC**

<i>COKE</i>	3
<i>SPRITE</i>	3
<i>TONIC WATER</i>	3
<i>JAPANESE TEA (HOT/COLD)</i>	2.5
<i>SINGHA SODA</i>	2

## BEER

	PER UNIT	BUCKET
KIRIN 330ML BOTTLE	\$11	\$45
HEINEKEN 325ML BOTTLE	\$12	\$50
PERONI 330ML BOTTLE	\$12	\$50
GUINNESS DRAUGHT 440ML CAN	\$15	\$55



BUCKET OF 5 BEERS  
*while stocks last!*

DRINKS







neeyakitori



www.neeyakitori.com



NEE  
YAKITORI & BAR



AMEISING  
BAR & DINING

